

CONSULTATION REPORT

REPORT ON THE CONSULTATION RELATING TO THE PROPOSAL TO RELOCATE THE INCLUSION AND WELLBEING SERVICE (IWBS) FROM THE LAURIESTON CAMPUS TO THE DAWSON CENTRE

14 February 2025

This document has been issued by Falkirk Council in accordance with the
Schools (Consultation) (Scotland) Act 2010

Contents

1. The Proposal.....	3
2. Reasons for this proposal	3
3. Introduction	5
4. Background.....	5
5. Consultation Process	6
6. Pupil Engagement.....	8
7. Responses to the Consultation Exercise	9
8. Authority Response to the Main issues Raised.....	13
9. Education Scotland's Report and Response to Main Issues Raised.....	15
10. Alleged Omissions or Inaccuracies	16
11. Compliance with sections 9 and 11 of the Schools (Consultation) (Scotland) Act 2010.....	17
12. Conclusions.....	17
13. Recommendations	18
Appendix 1: Proposal Document.....	19
Appendix 2: Notice of Consultation	29
Appendix 3: Responses from Pupils	32
Appendix 4: Responses to the online survey	35
Appendix 5: Public Meeting Minutes	40
Appendix 6: Presentation Slides	44
Appendix 7 Education Scotland Report.....	48

1. The Proposal

Falkirk Council is proposing, subject to the outcome of the statutory consultation process, that:

- **The Inclusion and Wellbeing Service (IWBS) will be relocated from the current location at Laurieston Campus, Bog Road, Falkirk to the Dawson Centre Campus, David's Loan, Falkirk from April 2026 or as soon as possible thereafter.**

2. Reasons for this proposal

The Inclusion and Wellbeing Service (IWBS) exists to support children and young people aged 3-18 with additional support needs from across the Falkirk Council area.

The existing campus consists of a number of disparate buildings historically used as business premises, a territorial army hub and most recently a private religious school.

There are several issues including:

- The school facilities within the existing Laurieston Campus are considered Poor ("C" rated) in terms of overall Condition and Bad ("D" rated) for Suitability.
- temporary modular units at the end of their life
- accommodation that is not fully accessible
- poor quality outdoor spaces and
- being in a mainly business / industrial location.

The current premises do not meet the needs and aspirations of the service and is not considered a positive environment for children and young people with social, emotional and behavioural needs, many of whom are vulnerable. It is also not conducive to providing a modern, effective and efficient working environment for staff and partners.

With the current poor condition and backlog in maintenance relating to the building, its poor suitability and its poor location, other suitable alternative properties were considered to provide an improvement of the service delivery environment.

An opportunity was identified to utilise two properties adjacent to each other for both primary and secondary pupils who attend the IWBS; the Dawson Centre and Excellence in Childcare Centre (Dawson Campus). These are considered compatible in terms of size, have locational benefits (next to Langlees Primary School) and can provide a modern fit for purpose facility compatible with the objective of providing good quality learning environments for our pupils and staff.

The Dawson Centre and the Excellence in Childcare Buildings are both identified in the Strategic Property Review (SPR) to close from 1 April 2025. It is therefore recognised that the opportunity for the relocation of the IWBS will enable the future beneficial use of the property.

It is anticipated that the proposed Dawson Campus would be satisfactory to good “A/B rated” for suitability and satisfactory (“B” rated) for condition once the project is complete. This would represent a substantial improvement on the current campus.

The existing IWBS location is not considered fit for purpose and does not fulfil the ambition we have for positive learning spaces for our Children and Young People. The proposal will greatly improve the learning environment for pupils and staff.

In addition, to them being in better condition, accessible and more energy efficient they will be more suitable with access to quality external spaces including a playing field, garden area and MUGA pitch.

The enabling of separate primary and secondary classrooms located within separate buildings within a single campus environment will enable more easier transitions for pupils. Dedicated nurture and support areas and flexible support accommodation further improve the support to pupils, parents and staff.

A range of benefits relating to the project have been identified and these include:

- Improved learning experience for Children and Young People.
- Improved environment for staff and pupils within the IWBS
- Avoidance of backlog maintenance capital expenditure at existing IWBS Laurieston Campus of circa £2.4m and reduced risk of compliance and component failure
- Improvement of backlog maintenance required at Dawson Campus (approximately £800,000) through the proposed works
- Securing the future of the buildings that would form the Dawson Campus to provide continued community access which is currently uncertain due to the Strategic Property Review

The asset and educational outcomes of the proposals will in summary be to provide the IWBS with a school that is satisfactory or better in terms of both condition and suitability with good learning and nurture environments

The Dawson Centre and the Excellence in Childcare Buildings currently operate as a Community Hall/Centre with some training rooms, and it is recognised that these facilities play an important role in the local community which covers areas with high levels of multiple deprivation. The majority of existing use occurs in the evenings. **It is proposed that community access will be available on the refurbished Dawson Campus after the school day, weekends and school holidays (subject to demand).**

This document has been issued by Falkirk Council in accordance with the Schools (Consultation) Act 2010.

3. Introduction

This consultation report has been prepared in accordance with the Schools (Consultation) (Scotland) Act 2010.

The purpose of this report is to:

- Provide a record of the total number of written representations made during the statutory consultation period;
- Provide a summary of the written representations;
- Provide a summary of the oral representations made at the public meeting held on 27th November 2024;
- Provide a statement of Education Services response to those written and oral representations;
- Provide the full text of Education Scotland's report and a statement of Education Services response to this report;
- State how Education Services reviewed the above proposal with regard to the representations received during the statutory consultation period and the report from Education Scotland;
- Provide details of any omission from, or inaccuracy in, the Proposal Paper and state how Education Services acted upon it;

4. Background

The Education (Scotland) Act 1980 places a legislative duty on the Council to make adequate and efficient provision of school education across its area. This duty applies in respect of both the current school population and anticipated pattern of demand.

Section 3D of the Standards in Scotland's Schools etc. Act 2000 (as inserted by Section 2 of the Education (Scotland) Act 2016) introduces a requirement on education authorities to carry out their duty to ensure the delivery of improvement in the quality of school education, which is provided in the schools they manage, with a view to achieving the strategic priorities of the National Improvement Framework. It is, therefore, the duty of the education authority to ensure that the education it provides is directed to the development of the personality, talents and the mental and physical abilities of the children to their fullest potential.

In addition, Councils have a statutory duty to secure best value in terms of the Local Government in Scotland Act 2003 by continuous improvement in performance of the local authority's functions, while maintaining an appropriate balance between quality and cost and having regard to economy, efficiency, effectiveness, equal opportunities and the achievement of sustainable development.

The Council has a number of statutory duties relating to the provision of education in its area including the statutory consultation that must be undertaken when proposing a permanent change to any of their schools, including nursery schools, such as

closure, relocation or change of catchment area. The Schools (Consultation) (Scotland) Act 2010 principal purpose is:

“to provide strong, accountable statutory consultation practices and procedures that local authorities must apply to their handling of all proposals for school closures and other major changes to schools.”

The 2010 Act’s principal purpose is to provide strong, accountable statutory consultation practices and procedures that local authorities must apply to their handling of all proposals for school closures and other major changes to schools. These consultation processes are expected to be robust, open, transparent and fair, and seen to be so. They are also expected to be consistent across Scotland.

This Consultation Report has been prepared in accordance with the Schools (Consultation) (Scotland) Act 2010, having regard to the statutory guidance published by the Scottish Government on 14 May 2015 and the complementary guidance published by Education Scotland (revised July 2023), which are available for reference at the following websites:

Schools (Consultation) (Scotland) Act 2010:
<http://www.legislation.gov.uk/asp/2010/2/contents>

Schools (Consultation) (Scotland) Act 2010, Statutory Guidance (updated October 2022):
<https://www.gov.scot/publications/schools-consultation-scotland-act-2010-statutory-guidance/>

Education Scotland Guidance for Local Authorities (revised July 2023)
<https://education.gov.scot/media/rh0jzhvo/external-schools-consultation-education-scotland-guide-for-local-authorities-july-2023.pdf>

5. Consultation Process

The proposal paper was published on 11th November 2024 on the Falkirk Council website and participate+ platform

A copy of this document was provided to:

- Parents and carers of all pupils who access the Inclusion and Wellbeing Service
- IWBS School staff and trade union representatives
- Elected members of Falkirk Council
- MSPs for the area and the Constituency MP
- The Community Planning Partnership
- Staff at the Dawson Centre
- Identified user groups at the Dawson Centre
- Staff at the Excellence in Childcare Centre
- West Lothian Council

There were no Community Councils in Bainsford and Langlees and Lower Braes to consult.

A copy of this document was also available on request, free of charge, from:

- Children's Services, Suite 1A, Falkirk Community Stadium, 4 Stadium Way, Falkirk, FK2 9EE
- Falkirk Council Libraries
- Falkirk Council Advice and Support Hubs
- IWBS Service, Bog Road, Falkirk, FK2 9PB
- Dawson Centre, David's Loan, Falkirk, FK2 7RG

The document was also available on request in alternative formats or in translated form for readers whose first language is not English.

A Notice of Consultation was emailed to the consultees listed above on the 11th November and 12th November 2024. This provided details of how to access the Proposal Paper and Educational Benefits Statement; how to submit responses via Falkirk Council website and in writing; and the date of the public meeting.

The Notice of Consultation, the Proposal Document and the Public Meeting were advertised on the Council's Participate+ platform, in the local newspaper (the Falkirk Herald)

The Consultation was undertaken over a 6-week period from 11th November 2024 to 23rd December 2024.

Education Services and Place Services officers attended a public meeting on the 27th November 2024, 18.30 at Langlees Primary School.

The Head of Centre of the IWBS was provided a consultation survey for pupils at the Inclusion and Wellbeing Service to complete with support provided by staff members.

This Consultation Report contains Falkirk Council's response to the issues raised regarding the proposal during the consultation exercise. It will be published on Falkirk Council's website for a period of no less than 3 weeks prior to the final consideration of the proposal at Executive Committee on 13 March 2025.

6. Pupil Engagement

Pupils views are a significant part of the consultation process. 22 pupils responded to the consultation survey (67% of pupils attending the IWBS Service).

Table 1: Pupil's overall opinion on relocating the IWBS

	Number	%
Strongly Supportive/ Supportive	10	45.5%
Neutral	10	45.5%
Strongly Unsupportive/Unsupportive	2	9.1%
Total	22	

A summary of comments made by the Inclusion and Wellbeing pupils are follows:

Pupils were asked how they felt about moving to the Dawson Centre. Pupils in support of the relocation felt positive about the relocation to the Dawson Centre. However, some pupils did say they felt a *"little worried"* about the move. Pupils who responded with "neutral" or were unsupportive and strongly unsupportive felt indifferent about the move with responses such as *"I don't care"*, *"Doesn't bother me"*, *"fine"*.

Pupils were asked "tell us anything that you would be excited about with the move to the Dawson Centre?" 13 pupils provided a positive response to this question. These responses are summarised below:

- Improved Environment and Facilities
 - Outdoor space
 - Football pitch
 - Better building structure
 - Better classrooms
- New opportunities and experience at the new campus
- Closer to home and friends
- The new campus is more accessible

9 pupils responses to the question with indifferent responses: *"no"*, *"nothing"*.

Pupils were asked "Is there anything that worries you about the move to the Dawson Centre? 50% of the pupils replied with *"no"*.

Some pupils provided some concerns about the relocation. They are:

- the uncertainty/unknown about what is at the new facilities;
- don't know where the new campus is;
- further to travel to the new campus;
- leaving friends;
- facilities might not be as big as the Laurieston Campus;
- class size; and
- will there be a time-out space?

Lastly, pupils were asked “What would you like the new school location to have?”

Pupils responded with the following:

- Sports facilities (football pitch; gym hall and fitness facilities; swimming pool)
- Social Areas (common room; places to hang out with friends)
- Technology/Gaming area
- Facilities (gardening area; teaching kitchen; sensory room; soft play area; nice canteen; sweet shop)

7. Responses to the Consultation Exercise

7.1 Summary of Oral Representations made at the Public Meetings and Response

28 consultees attended the Public Meetings on the 27 November 2024 at Langlees Primary School.

The issues raised at the public meetings by consultees are grouped by key themes which are summarised below:

- Uncertainty over the ownership and management of the MUGA
- Lack of consultation with stakeholders
- Loss of daytime community access to the Dawson Centre
- Future of the Dawson Centre and MUGA if the proposal isn't implemented
- The benefits of relocating the services for children with additional support needs
- Insufficient parking and accessibility for Langlees Primary School parents/carers
- Challenges community groups might face with the new facility
- Discussion around the future use of the land around the Dawson Centre
- Falkirk Council's budget priorities
- Security and restricted access to the public
- Clarity on whether the proposal would increase capacity and resources for the service

A Minute of the meeting is included in Appendix 5.

7.2 Summary of consultation responses

7.2.1 Summary of online comments received in support of the proposal

9 responses to the online survey (53% of the total) are supportive or strongly supportive of the relocation of the Inclusion and Wellbeing Service. The key points they made were:

Infrastructure and Facilities

- Suggestion that the current layout of the new campus may not be optimised for the staff needs and reconfiguration of the internal space to make it more functional and meet the needs of staff and learners
- The requirement of secure fencing
- Development of outdoor facilities
- Better parking facilities for various users
- Installing CCTV and Security systems
- Providing storage facilities

One respondent provided practical solutions to the facilities concerns they raised:

- Adding storage facilities
- Efficiently utilising outdoor space
- Explore the purchase and use of additional outdoor buildings

Improved Learning Environment for IWBS Students

- Improved facilities for students
- Enhanced building quality and condition
- Access to better learning and teaching environments, including outdoor learning space

Accessibility and Inclusion

- Ensure the facility is fully accessible to individuals with disabilities
- The importance of inclusivity in the design and infrastructure of the new facility

Development of outdoor facilities

- Emphasis on the outdoor space to benefit both pupils and the local community
- Outdoor facilities for a learning environment

Financial and Practical Concerns

- Acknowledgment regarding the financial realities influencing the decision
- Recognising the cost-effectiveness of repurposing the Dawson Centre rather than building a new facility
- This option is a compromise solution with some regrettable consequences for the local community

7.2.2 Summary of online comments received not supportive of the proposal

5 responses to the online survey (30% of the total) were unsupportive or strongly unsupportive of the relocation of the Inclusion and Wellbeing Service. The key points they made were:

Community Impact

- Loss of a community amenity in an area which has high levels of deprivation
- The benefits are exclusive to the school and do not extend to the community
- Measures to be put in place to mitigate adverse community impact.
- The Dawson Centre provides community-based programmes which will be lost
- Concern about the reduced availability of shared sports facilities for Langlees Primary School pupils.

Traffic and Safety Concerns

- The Dawson Centres parking facilities are used by parents at Langlees Primary School as a safe place to drop-off and pick-up pupils.
- Insufficient space for a safe drop-off and pick-up
- No designated crossing patrol
- Dangerous traffic conditions caused by speeding and roadblocks
- Increase in traffic around 3 schools at the same time (Early years, Langlees School and Dawson Campus)
- Concern there will be an increase in abuse on staff and parent volunteers due to the increased volume of people accessing the 3 schools (Early years, Langlees School and Dawson Campus)
- Car charging points at the Dawson Centre are used by the general public

One respondent proposed a solution for the pick-up and collection of pupils over the 3 educational facilities:

- Establish a dedicated drop-off/pick-up area or turning circle
- Adding a crossing near the school to improve safety

Loss of Safe Access to Langlees Primary School

- Concern about losing a safe and convenient access route for both the school and nearby houses

Access to the Dawson Campus for Community Groups and Charities

- Concerns about maintaining access for community users
- Guaranteeing availability of facilities during evenings, weekends and holidays
- Offering suitable alternatives for groups displaced by the relocation
- Providing contracts/agreements to ensure certainty of access for community groups

7.2.3 Summary of online comments received who opted neutral

3 responses to the online survey (18% of the total) were neutral on the relocation of the Inclusion and Wellbeing Service. The key points they made were:

Impact on the Local Community

- Concern on the impact on the local community the relocation will have.

Traffic and Parking Concerns

- Increased traffic and footfall due to the relocation of the IWBS and the already large catchment area for school and nursery
- Existing parking and traffic issues in the area are expected to worsen with the move
- Limiting the Dawson Centre car park will further exacerbate the existing traffic concerns
- Current parking area is not safe for pupils
- Increased traffic will heighten safety of children

Staff Challenges

School staff have faced abuse in the past while managing the car park

7.3 Summary of representation made through the online survey

There were 17 responses to the online survey.

Table 2: Survey responses are summarised by type of respondent:

Respondent Type	No. of responses	% of responses
Community Group using the Dawson Centre	2	11.8%
Dawson Centre User	1	5.9%
Local Resident	2	11.8%
Parent/Carer of a pupil attending the IWBS	1	5.9%
Staff Member at the IWBS	3	17.6%
Trade union	1	5.9%
Other	7	41.2%
All Respondents	17	100%

The responses were as follows for the question: What is your overall opinion on relocating the Inclusion & Wellbeing Service?

Table 3: Overall Opinion on the relocation of the IWBS

	No. of responses	% of responses
Strongly Supportive	5	29.4%
Supportive	4	23.5%
Neutral	3	17.6%
Unsupportive	4	23.5%
Strongly unsupportive	1	5.9%
All Responses	17	100%

Table 4: Percentage of responses by respondents

Respondent	Strongly Supportive/ Supportive	Neutral	Unsupportive/ Strongly Unsupportive
Community Group using the Dawson Centre			100%
Dawson Centre User			100%
Local Resident	50%		50%
Parent/Carer of a pupil attending the IWBS	100%		
Staff Member at the IWBS	67%	33%	
Trade union	100%		
Other	57%	29%	14%
All Respondents	53%	18%	29%

The full responses from consultees who responded to the survey can be read in Appendix: 4

8. Authority Response to the Main issues Raised

Space and Facilities for Staff

Respondents noted a lack of sufficient workspaces for staff, particularly those who do not have classrooms or assigned bases

Response: These observations will be taken into consideration at the detailed design stage and school staff will continue to be consulted as the project progresses. Offices, staff bases and conference room on upper floor are considered sufficient to meet demand.

Traffic, Parking and Safety Concerns

There is a concern the relocation will increase existing traffic and parking issues in the area, with concerns about losing the car parking facilities at the Dawson Centre and insufficient drop-off and pick-up areas to support 3 educational facilities in the

same vicinity. Respondents emphasised safety concerns for pupils, parents and staff, including risks from speeding vehicles and overcrowded roads.

Response: Parking will be considered as part of the statutory planning process. It is proposed that some space within the car park at the Dawson Centre/Excellence in Childcare Centre where the Electrical Vehicle Charges sit, will continue to be available for the community during the day. The updated design plans include a gate which will separate the car park with community access, from the school car park.

Loss of a Community Amenity

Concerns were raised about the impact on a local community with high areas of deprivation, with respondents highlighting the Dawson Centre's importance as an accessible resource for community members.

Response: The Dawson Centre together with the multi-use games area will be available for community access after the school day, at weekends and school holidays. As this building is part of Falkirk Council's Strategic Property Review, it is due to close from 1st April 2025 in the absence of any forthcoming Community Asset Transfer. The relocation of the IWBS to the Dawson Campus will ensure the facility remains open for the local community.

Ownership and management of the MUGA

There was disagreement over who owns the MUGA with community members arguing it belongs to a charitable organisation.

Response: There is an existing lease in place on the MUGA with a local community group. Discussions have progressed with the group to enable the amendment of this lease, ensuring the group can continue to use the MUGA after the school day, at weekends and school holidays. The commitment is that the Council will pay for the maintenance of the MUGA as part of this arrangement and will incur all associated costs, removing this burden from the community group. This mitigates the community concerns on continued use.

Security and Restricted Access

There was concern from members of the public regarding plans to secure the school with fencing during operational hours which were seen as restrictive and limiting public access to EV charging points, green spaces and walkways, including access to Langlees Primary School.

Response: The updated design plans facilitate access to EV charging points and include the creation of a new path which will ensure access to Langlees Primary School is enabled. Given the IWBS is a school, this will have a secure perimeter during the day in line with all other educational establishments. These will also be considered as part of the statutory planning process.

Financial Burden on Community Groups

Community members worried about the introduction of fees for facilities use, particularly for organised activities, and the potential financial strain this could create.

Response: There will continue to be a fee for the use of buildings, in line with current practice for hiring space in community facilities. The Council are introducing a new way of managing property from 1st April 2025. Part of this will include a standardised approach to fees for using all buildings.

9. Education Scotland's Report and Response to Main Issues Raised

9.1 Education Scotland's Report

In line with the requirements of the Schools (Consultation) (Scotland) Act 2010, a report was provided by Education Scotland on the educational aspects of the Proposal to relocate the Inclusion & Wellbeing Service. This report is attached as Appendix 7.

In preparing this report, HM Inspectors undertook the following activities:

- attendance at the public meeting held on 27 November 2024 in connection with the council's proposal;
- consideration of all relevant documentation provided by the council in relation to the proposal, specifically the educational benefits statement and related consultation documents, written and oral submissions from parents and others; and
- visits to the site of Laurieston Campus, Bog Road, Falkirk and the Dawson Centre Campus, David's Loan, Falkirk, including discussion with relevant consultees.

The Education Scotland report is attached in full at Appendix 9.

The report findings can be summarised as follows:

(a) HM Inspectors agree that Falkirk Council's proposal to relocate IWBS from its current premises at the Laurieston Campus to refurbished accommodation in the Dawson Centre building is of clear educational benefit. The council outlines the benefits for children and young people well. The move to refurbished premises will allow staff to better meet the range of pupil's needs in a more suitable and inclusive environment. Key stakeholders welcome the proposal. They feel that the relocation to a refurbished building will provide a much-improved environment for learning

(b) In taking forward the proposal the council should continue to consult with staff and stakeholders at IWBS. In its consultation report, the council will need to set out the actions it has taken to address the omission in the proposal relating to proposed parking at the Dawson Centre. The council should continue to work with the community to outline in more detail how the refurbishment might fulfil its dual education and community role.

9.2 Falkirk Council's Response to Education Scotland's Report

Falkirk Council welcomes the report from Education Scotland and accepts its findings. The authority response to the findings obtained within the Education Scotland Report as outlined in (b) above is as follows:

"In taking forward the proposal the council should continue to consult with staff and stakeholders at IWBS."

"The council should continue to work with the community to outline in more detail how the refurbishment might fulfil its dual education and community role."

Response: Further communication on the details of the proposal will continue to be carried out with key stakeholders as the project progresses. Neighbours and community groups will have the opportunity to provide views through the planning process. Staff and where required, pupils will continue to be engaged as the project progresses. Community users of the Dawson Centre facilities will continue to be engaged as the project progresses to ensure maximum benefit is achieved for all.

"In its consultation report, the council will need to set out the actions it has taken to address the omission in the proposal relating to proposed parking at the Dawson Centre."

Response: As previously detailed in Section 8 of this report, parking will be considered as part of the statutory planning process. It is proposed that some space within the car park at the Dawson Centre/Excellence in Childcare Centre where the Electrical Vehicle Charges sit, will be available for the community during the day. The updated design plans include a gate which will separate the car park with community access, from the school car park.

10. Alleged Omissions or Inaccuracies

Section (10) (3) of the Schools (Consultation) (Scotland) Act 2010 also places a requirement on the Council to provide details of any inaccuracy or omission within the Consultation Proposal Document which has either been identified by the Council or raised by consultees. This section of the 2010 Act also requires the Council to provide a statement on the action taken in respect of the inaccuracy or omission, or, if no action was taken, to state that fact and why.

No inaccuracies or omissions were identified within the within the Consultation Proposal Document by Education Services or Consultees.

11. Compliance with sections 9 and 11 of the Schools (Consultation) (Scotland) Act 2010

Section 9(1) of the Schools (Consultation) (Scotland) Act 2010 states that:

After the Education Authority has received Education Scotland's report, the Authority is to review the relevant proposal having regard (in particular) to:

- (i) written representations received by the Authority (from any person) during the consultation period,
- (ii) oral representations made to it (by any person) at the public meeting,
- (iii) Education Scotland's report.

Following receipt of the Education Scotland report, 17 survey responses received during the consultation period and consideration of oral representations made at a public meeting held during the consultation period, officers reviewed the proposal.

The feedback from the consultation was considered by relevant officers within Education and Place Services. Data and factual information was checked where required and advice and input was sought from other Council Services where needed to consider the issues raised. This ensured that the Council met the requirements of sections 9(1) of the 2010 Act.

Under the terms of Section 11 of Schools (Scotland) (Consultation) Act 2010, it is a legal requirement that the Council should not reach any formal decision without having reviewed the relevant proposal having regard to:

- a) relevant written representations received from any person during the consultation period;
- b) oral representation made to it by any person at the public meetings held on;
- c) the Education Scotland report;
- d) preparing a Consultation Proposal; and
- e) waiting until a period of three weeks starting on the day on which this Consultation Report is published in electronic and printed form has expired.

As it is the intention that this Consultation Report should be published, both electronically and in paper form, if required, on 14 February 2025, this meets the statutory requirement to publish this report for more than three weeks before consideration of the proposal by Falkirk Council.

12. Conclusions

Based on the feedback received and taking account of the educational benefits of the proposal it is concluded that:

- The IWBS is an authority wide service that is utilised to provide appropriate, additional support to specific groups of young people and the existing IWBS

location is not fit for purpose and rated “D” bad in terms of suitability and rated “C” poor in terms of condition with significant backlog maintenance.

- The Council believes that the measures proposed in this document will improve the learning environment and experience for current and future pupils in the Inclusion and Wellbeing Service
- There are strong educational arguments in support of this proposal
- The proposal will allow to secure the future of the buildings that would form the Dawson Campus which are currently uncertain due to the Strategic Property Review
- This proposal will allow for continued access for community use during evenings, weekends and school holidays.
- It is further recognised that should this proposal be approved then it will be incumbent on Education Services to ensure that children and families are well supported in their transition from the Lauriston Campus to the Dawson Campus.

13. Recommendations

It is recommended that that the Council approves the following:

- **The Inclusion & Wellbeing Service will be relocated from the Laurieston Campus, Bog Road, Falkirk to the Dawson Centre Campus, David’s Loan, Falkirk**
- **The Inclusion & Wellbeing Service will relocate from April 2026 or soon as possible thereafter.**

Appendix 1: Proposal Document

THIS IS A CONSULTATIVE DOCUMENT



Falkirk Council
Children's Services

Proposal Paper

That, subject to the outcome of this proposal:

- **The Inclusion & Wellbeing Service (IWBS) will be relocated from the Laurieston Campus, Bog Road, Falkirk to the Dawson Centre Campus, David's Loan, Falkirk from April 2026 or as soon as possible thereafter**

This document has been issued by Falkirk Council for proposal in terms of The Schools (Consultation) (Scotland) Act 2010.

1. REASONS FOR FORMULATING THIS PROPOSAL

The Inclusion and Wellbeing Service (IWBS) exists to support children and young people aged 3-18 with additional support needs from across the Falkirk Council area. These needs can be social, emotional and/or behavioural. The supports offered include advice, outreach support within mainstream and shared in reach support on campus. Allocated places at the Inclusion and Wellbeing Services are undertaken via a Placement Change Panel convened by Education. The number of pupils currently attending the IWBS is 32 (12 Primary and 20 Secondary) with some additional spaces retained for pupils currently out of authority and the service need to ensure capacity for 42 pupils at any one time. There are 30 staff currently based in the building including teachers, inclusion support workers, early years officers, support for learning assistants, family support workers, clerical staff and management staff. In addition, there are 8 outreach staff members who also use the building.

The existing campus consists of a number of disparate buildings historically used as business premises, a territorial army hub and most recently a private religious school. There are a number of issues including:

- The school facilities within the existing Laurieston Campus are considered Poor (“C” rated) in terms of overall Condition and Bad for Suitability (“D” rated).
- temporary modular units at the end of their life
- accommodation that is not fully accessible
- poor quality outdoor spaces and
- being in a mainly business / industrial location.

In short, the current premises do not meet the needs and aspirations of the service and is not considered a positive environment for children and young people with social, emotional and behavioural needs, many of whom are vulnerable. It is also not conducive to providing a modern, effective and efficient working environment for staff and partners.

With the current poor condition and backlog in maintenance relating to the building, its poor suitability and its poor location, other suitable alternative properties were considered to provide an improvement of the service delivery environment.

An opportunity was identified to utilise two properties adjacent to each other for both primary and secondary pupils who attend the IWBS; the Dawson Centre and Excellence in Childcare Centre (Dawson Campus). These are considered compatible in terms of size, have locational benefits (next to Langlees Primary School) and can provide a modern fit for purpose facility compatible with the objective of providing good quality learning environments for our pupils and staff.

It is anticipated that the proposed Dawson Campus would be satisfactory to good “A/B rated” for suitability and satisfactory (“B” rated) for condition once the project is complete. This would represent a substantial improvement on the current campus.

The existing IWBS location is not considered fit for purpose and does not fulfil the ambition we have for positive learning spaces for our Children and Young People. The proposal will greatly improve the learning environment for pupils and staff.

In addition, to them being in better condition, accessible and more energy efficient they will be more suitable with access to quality external spaces including a playing field, garden area and MUGA pitch.

The enabling of separate primary and secondary classrooms located within separate buildings within a single campus environment will enable more easier transitions for pupils. Dedicated nurture and support areas and flexible support accommodation further improve the support to pupils, parents and staff.

A range of benefits relating to the project have been identified and these include:

- Improved learning experience for Children and Young People.
- Improved environment for staff within the IWBS
- Avoidance of backlog maintenance capital expenditure at existing IWBS Laurieston Campus of circa £2.4m and reduced risk of compliance and component failure
- Improvement of backlog maintenance required at Dawson Campus (approximately £800,000) through the proposed works
- Securing the future of the buildings that would form the Dawson Campus to provide continued community access which is currently uncertain due to the Strategic Property Review

The asset and educational outcomes of the proposals will in summary be to provide the IWBS with a school that is satisfactory or better in terms of both condition and suitability with good learning and nurture environments

2. PROPOSED PLAN FOR DEVELOPMENT OF THE DAWSON CAMPUS

The existing IWBS location is not fit for purpose and does not fulfil the ambition we have for positive learning spaces for our Children and Young People. The proposals will greatly improve the learning environment for pupils and staff. In addition, to them being in better condition, accessible and more energy efficient they will be more suitable with access to quality external spaces including a playing field, garden area and MUGA pitch. The enabling of separate primary and secondary classrooms located within separate buildings within a single campus environment will enable more easier transitions for pupils. Dedicated nurture and

support areas and flexible support accommodation further improve the support to pupils, parents and staff.

The Dawson Centre and the Excellence in Childcare Buildings are both identified in the Strategic Property Review (SPR) to close from 1 April 2025. It is therefore recognised that the opportunity for the relocation of the IWBS will enable the future beneficial use of the property.

Both facilities currently operate as a Community Hall/Centre with some training rooms, and it's recognised that these facilities play an important role in the local community which covers areas with high levels of multiple deprivation. The majority of existing use occurs in the evenings. It is proposed that community access will be available after the school day, weekends and school holidays (subject to demand).

The proposal enables the delivery of a quality learning environment for pupils and staff, together with enabling community access.

Based on the project key milestones, operational availability is planned February / March 2026 and school relocation after Easter (April) 2026.

3. EDUCATIONAL BENEFITS STATEMENT

Assessment of likely educational benefits on pupils

If this proposal is implemented, the Council believes that there will be considerable educational benefits arising from this. These centre around:

- Learning and teaching.
- Meeting learners needs.
- Broadening the range of opportunities; and
- the environment for learning including curriculum.

The current campus has limited/little facilities in outdoor areas, sports and access to the community. The Primary and Secondary children have no ownership of the areas they use as these are all shared for the whole school. Moving to Dawson's centre campus enables the transformation of the education environment, setting and ethos for the entire school which will bring benefits as outlined below.

Learning and Teaching

The campus at Dawson's centre provides extensive outdoor grounds and a floodlit MUGA pitch to enable opportunities for outdoor learning, gardening and sports qualifications. Wider achievements and accreditation awards in health and wellbeing, life-skills, vocational awards as well as enterprise opportunities and community experiences will enable pupils to develop skills for life, learning and work.

The classrooms will be bright and modern to provide a more motivating and engaging learning environment and also greater opportunities for digital learning, particularly for learners who may be disengaged.

There will be improved ability to deliver alternative education qualifications from SQA such as national progression awards and courses that award SCQF points to enable young people to progress to a positive destination.

The Primary area has its own separate building and extensive outdoor play area that can be created to accommodate the play, health and wellbeing needs of primary aged children which enable the tailoring of the curriculum to meet the needs of learners in an age and stage appropriate way.

Meeting learners needs

The secondary part of the campus is a brick-built building in a harmonious setting with a large outdoor campus and modern facilities. Young people will feel valued with their education is being delivered in a campus developed specifically for their needs. There will be a greater focus on their health and wellbeing and readiness to learn in this environment.

This will further enable the development of the 4 capacities (curriculum for excellence) for our young people to become successful learners, confident individuals, responsible citizens and effective contributors.

Broadening the range of opportunities

The environment, location and facilities will further enhance the range of educational opportunities that can be planned and delivered. This will ensure the curriculum is broad and bespoke and relevant to the needs of all the children and young people who access this specialist service.

Environment for learning including curriculum

Engagement in the curriculum can be strongly influenced by the learning environment. There is evidence nationally, that the more attractive the environment, the more engagement from learners and pride in their education. By accessing a range of classroom environments and flexible spaces, children and young people will be allowed opportunities to work in a variety of ways responsive to their needs which will impact positively on their attendance and engagement and attainment.

Assessment of likely educational benefits on any existing pupils and any children and young people who would (in the future but for implementation) be likely to become pupils of the school.

The relocation of the IWS enables a responsive setting to address the needs of any learners who require access to a bespoke, person-centred education setting

whose barriers prevent them from thriving and learning in a mainstream setting. Barriers relating to neurodiversity and social anxiety are increasing and therefore it is envisaged this campus will begin to cater for young people whose distress arises from neurodiversity and sensory needs who are overwhelmed by large mainstream, unpredictable environments.

Assessment of likely educational benefits on the pupils of any other schools in the Council area

The outreach service at IWS and training offer will be of benefit to all other local council schools. The central location will make this a more efficient service. There will be more opportunity for shared placements with the local community so that more children can feel a sense of belonging and engagement with their education wherever it takes place.

Due to the improved campus and curriculum, placements are likely to achieve greater success whilst attending IWS which results in sustained placement support or greater success in transitioning back to mainstream placement.

Consideration of how to minimise or avoid any adverse effects that may arise from the implementation of this proposal

Engagement with the local community and schools to develop a shared understanding of the use of the campus by IWS. Positive and timeous communications. Involvement of parents, staff and children to be involved in the development and transition of the campus. Consideration of access to the campus facility for the local community outwith school day/terms.

Summary of educational benefits statement

In summary, the life chances of children and young people attending the IWS will be improved as a result of this campus move with the expectation that the campus will enable an improved curriculum delivery and offer, which the pupils will engage with, and participate in. The focus on wellbeing for the pupils, families and staff. This will enable better skills development and attainment of alternative qualifications to enable them to move on from school successfully to a positive destination.

4. PROPOSED COMMUNITY USE OF DAWSON CENTRE

The Dawson Centre and the Excellence in Childcare Buildings are both identified in the Strategic Property Review (SPR) to close from 1 April 2025. Whilst there has been an expression of interest in the property this has not developed to a full Community Asset Transfer application. It is therefore recognised that the opportunity for the relocation of the IWBS will enable the future beneficial use of the property and continue to provide space to enable the majority of community activities currently being accommodated.

They both currently operate as a Community Hall/Centre and it's recognised that these facilities play an important role in the local community which covers areas with high levels of multiple deprivation. The majority of existing use occurs in the evenings. It is proposed that community access will be available after the school day, weekends and school holidays (subject to demand).

In relation to daytime use, the main user is a local foodbank who operate for a few hours one day per week and engagement will occur with the group to consider an alternative community facility nearby or to alter the time of operation to mitigate the impact on this service to the community. Officers will be engaging with all groups who utilise the building to ensure they are aware of the proposals and disruptions to occupancy during works and arrangements following the relocation of the IWBS.

The MUGA located at the Dawson Campus is currently subject to a lease to a community group. Engagement with the group will occur and a new arrangement put in place that will enable the continued use of the MUGA whilst removing their maintenance and management liabilities.

5. RESPONDING TO THE PROPOSAL

This Proposal Paper has been issued following a decision on 7th November 2024 of the Executive of Falkirk Council. This is to seek views on the proposal set out in this paper. This report is available here:

- <http://participateplus.falkirk.gov.uk/en-GB/projects/proposal-to-relocate-the-inclusion-and-wellbeing-service>

A formal consultation in accordance with the Schools (Consultation) (Scotland) Act 2010 is required for any proposal to relocate a school. This consultation is fully in accordance with the requirements of this legislation.

A copy of this Proposal Paper is available on the Falkirk Council website:
www.falkirk.gov.uk

A link to the electronic version of this document will be provided by letter to:

- Parents and carers of all IWBS pupils
- School staff and trade unions
- Community Councils
- The Community Planning Partnership
- The Dawson Centre and identified user groups
- Elected Members of Falkirk Council

A copy of this document is also available from:

- Children's Services, Suite 1A, Falkirk Community Stadium, 4 Stadium Way, Falkirk, FK2 9EE

- Inclusion & Wellbeing Service, Bog Road, Falkirk, FK2 9PB
- Dawson Centre, David's Loan, Falkirk, FK2 7RG

This document is available in alternative formats or in translated form for readers whose first language is not English. Please apply to Children's Services, Suite 1A, Falkirk Community Stadium, 4 Stadium Way, Falkirk, FK2 9EE by telephone on 01324 506600 or by email educ.consultation@falkirk.gov.uk

LENGTH OF CONSULTATION PERIOD

The consultation will take place between Monday 11th November and Monday 23rd December 2024.

PUBLIC MEETING

There will be a public meeting held at Langlees Primary School, David's Loan, Falkirk, FK2 7RG on Wednesday 27th November 2024 at 18.30. This meeting will be an opportunity for interest parties to:

- Hear about the proposal.
- Ask question about the proposal.
- Have their views recorded so that they can be taken into account as part of the consultation process.

A note will be taken at the meeting of questions and views. This note will be published in the consultation report which will be available on the Council website.

HOW TO RESPOND TO THE PROPOSAL

Interested parties are invited to respond on the proposal:

- Online: <https://participateplus.falkirk.gov.uk>
- By email: educ.consultation@falkirk.gov.uk
- In writing: IWBS Relocation Consultation, Children's Services, Suite 1A, Falkirk Community Stadium, 4 Stadium Way, Falkirk, FK2 9EE

All responses should be provided by Monday 23rd December 2024.

CONSULTATION WITH CHILDREN AND YOUNG PEOPLE

Pupils will be consulted about the proposal in school and further information about this will be provided to parent/ carers.

FOLLOWING THE CONSULTATION

Education Scotland – When the proposal document is published, a copy will also be sent to Education Scotland by the Education Authority. Education Scotland will also receive a copy of any relevant written representations received by the Authority from any person during the consultation period or, if Education Scotland agree, a summary of them. Education Scotland will further receive a summary of any oral representations made to the Local Authority at the public meeting which will be held and, as available (and so far, as otherwise practicable), a copy of any other relevant documentation.

Education Scotland will then prepare a report on the educational aspects of the proposal not later than 3 weeks after the Authority has sent them all representations and documents mentioned above. The 3-week period will not start until after the consultation period has ended. In preparing their report, Education Scotland may enter the affected school and make such reasonable enquiries of such people they consider appropriate and may make such reasonable enquiries as they consider appropriate.

Falkirk Council – the Education Authority will review the proposal having regard to the Education Scotland Report, written representations that it has received, and oral representations made to it by any person at the public meeting. It will then prepare a consultation report. This report will be published in electronic and printed formats. It will be available from the Council website and from Children's Services, Suite 1A, Falkirk Community Stadium, 4 Stadium Way, Falkirk, FK2 9EE free of charge. Anyone who made written representations to the Authority during the consultation period will also be informed about the report.

The report will include:

- A record of the total number of written representations made to the Authority during the consultation period.
- A summary of the written representations.
- A summary of the oral representations made at the public meeting.
- The Authority's response to the Education Scotland Report as well as any written or oral representations it has received, together with a copy of the Education Scotland Report and any other relevant information, including detail of any alleged inaccuracies and how these have been handled; and
- A statement explaining how the Authority complied with the requirement to review the proposal in light of the Education Scotland Report and representations (both written and oral) that it received.

The consultation report will be published and available for further consideration for a period of at least 3 weeks.

This report together with any other relevant documentation, will be considered by the Executive of Falkirk Council, who will come to a decision about the proposal.

NOTE ON CORRECTIONS

If any inaccuracy or omission is discovered in this proposal document, either by the Council or any person, the Council must investigate and decide what, if any, action is required.

If relevant information has been omitted or there has been an inaccuracy, the Council will then take appropriate action, which may include the issue of a correction notice, the publishing of a corrected Proposal Paper or the revision of the timescale for the consultation period, if appropriate. In that event, relevant consultees and Education Scotland will be advised. The Authority must inform the person who made the allegation and what action it has taken.

7 November 2024

Jon Reid
Director of Education Services

Appendix 2: Notice of Consultation

Email: educ.consultation@falkirk.gov.uk
Telephone: 01324 506600
Date: 11th November 2024



Falkirk Council
Children's Services

Dear Sir/ Madam

Statutory Consultation notice – Proposal to relocate the Inclusion and Wellbeing Service (IWBS) from the Laurieston to the Dawson Centre.

Falkirk Council is consulting on a proposal to relocate the Inclusion and Wellbeing Service (IWBS) from the current location at Laurieston Campus, Bog Road, Falkirk, to the Dawson Centre Campus, David's Loan, Falkirk.

This notice provides a summary of the proposal: it is a requirement for you to be notified of the consultation as a consultee, in accordance with Schedule 2 Section 1 of the Schools (Consultation) (Scotland) Act 2010 as amended. A full copy of the Proposal Document is available at: <http://participateplus.falkirk.gov.uk/en-GB/projects/proposal-to-relocate-the-inclusion-and-wellbeing-service>

Falkirk Council is conducting a public consultation from **Monday 11th November to Friday 23rd December 2024**. During this period, you will be able to make representation to Falkirk Council in respect of the proposal.

It is important that everyone we are consulting tells us what they think about the proposal. Please read this notice and summary and then consider the contents of the proposal document. You can then tell us what you think of the proposal by making written representation and/or by attending the public meeting. This notice and summary tell you how to do that.

We will consult by:

- Providing a Notice of the consultation and a summary of the proposal to the relevant consultees (this is that Notice and summary).
- Publication of the [Proposal Document](#)
- Placing an advert in the local press advertising the consultation
- Placing information on our website – <https://www.falkirk.gov.uk/services/council-democracy/consultations-surveys/>
- Putting information on our consultation hub <https://participateplus.falkirk.gov.uk>
- Holding a public meeting to explain the proposal
- Asking all consultees to tell us what they think of the proposal

A full copy of the proposal document is available:

- On our website at <https://www.falkirk.gov.uk/services/council-democracy/consultations-surveys/>
- By written request to educ.consultation@falkirk.gov.uk or Falkirk Council, Children's Service, Suite 1A, Falkirk Community Stadium, 4 Stadium Way, Grangemouth, FK2 9EE
- In printed form free of charge at Suite 1A, Falkirk Community Stadium, 4 Stadium Way, Grangemouth, FK2 9EE

The Proposal

Falkirk Council is proposing that:

The Inclusion & Wellbeing Service (IWBS) will be relocated from the Laurieston Campus, Bog Road, Falkirk to the Dawson Centre Campus, David's Loan, Falkirk from April 2026 or as soon as possible thereafter.

Reasons for this Proposal

This is being proposed for the following reasons:

- The current premises do not meet the needs and aspirations of the service and is not considered a positive environment for children and young people,
- The school facilities within the existing Laurieston Campus are considered Poor ("C" rated) in terms of overall Condition and Bad for Suitability ("D" rated).
- The temporary modular units are at the end of their life
- The accommodation is not fully accessible
- the quality of outdoor spaces is poor and
- being in a mainly business / industrial location.

Falkirk Council, as an Education Authority is required to secure adequate and efficient provision of school education (Section 1 of the Education Act 1980); and to endeavour to secure improvement in the quality of school education in schools that are managed by them (Section 3 of the Standards in Scotland's Schools Act 2000). This is reflected in the Falkirk Council Plan 2021-2030 priority: "Promoting opportunities and educational attainment and reducing inequalities"

A **public meeting** has been arranged at:

- Langlees Primary School, David's Loan, Falkirk, FK2 7RG on Wednesday 27th November 2024 at 18.30

The public meeting is open to all interested parties. At this meeting, council officers will give a presentation of the proposal, answer questions on it and record the oral representations of anyone who attends. There will be opportunity to complete a consultation response form.

Representations to the Proposal

This letter and the Proposal Document advises how you can make representation to this consultation process. You are invited to have your say on this proposal.

You can attend the public meeting and/or you can make written representations.

- On-line: <https://participateplus.falkirk.gov.uk>
- By email to: educ.consultation@falkirk.gov.uk.
- By Letter to: IWBS Relocation Consultation, Falkirk Council Children's Services, Suite 1A, Falkirk Community Stadium, 4 Stadium Way, Falkirk, FK2 9EE

Respondents should state the capacity in which they are expressing their views and agree to their statement/comments being published as part of the Statutory Consultation process and published in the final Consultation Report (all other personal information will be redacted).

Falkirk Council is seeking your views on the proposal during the consultation period, it does not assume that the proposal will go ahead. All points raised during the consultation period will be included in the final Consultation Report before being presented to Elected Members where a decision will be taken as to the outcome of this process.

What to do now

- Please read the full [proposal document](#)
- You are invited to attend the public meeting which will be held at Langlees Primary School, David's Loan, Falkirk, FK2 7RG on Wednesday 27th November 2024 at 18.30
- All responses must be made online, or in writing by Friday 23rd December 2024.

Following the consultation, all points raised will be carefully considered and Elected Members will then decide if the proposal should go ahead.

If the proposal goes ahead, any young people from the IWBS service will be relocated to the Dawson Campus from April 2026 or as soon as possible thereafter

Yours faithfully,

Jon Reid
Director of Education

Appendix 3: Responses from Pupils

Responses from those very supportive/supportive of the proposal

How do you feel about the IWBS moving to the Dawson Centre?

"not sure because I do not know what the new building is like"
"fine"
"I feel good about it"
"I feel happy about it"
"Happy and mixed feelings"
"I am feeling a little excited and a little worried"
"I'm looking forward to moving school, it will be a nice change"
"I feel happy about the school. Mainly because it is falling apart where it is"
"Don't mind"
"I don't really mind but a bit far from my house"

Can you tell us anything that you would be excited about with the move to the Dawson Centre?

"no"
"it's nicer"
"new stuff, new building"
"about a new sensory room not classrooms"
"pond outside"
"to be closer to my friends as they live next to the new school"
"I like the idea of a different school. The idea of new equipment does excite me."
"I can run home anytime I want. The Dawson Centre is a lot better structure wise"
"Outdoor space"
"no holes in the ceiling or rats and leaks"

Is there anything that worries you about the move to the Dawson Centre?

"No" (5 responses)
"new friends and leaving old friends behind"
"It's a smaller footprint than the current building. The facilities may not be as large as what we have more. More travelling to"
"No I don't have any worries about the Dawson Centre"
"Not knowing where it is"
"not big classes"

What would you like the new school location to have?

"Gym, football pitch"
"I don't know"
"football pitch, basket ball pitch"
"I would like a sensory room to be painted blue and black"
"pets and swimming"
"Better gym hall and play ground"
"A large gym hall. Good sports facilities"

"I would like to have the astroturf"
"Lunch hall, soft play room for good behaviour, ball put, garden, greenhouse"
"a gym"

From those with neutral responses to the proposal

How do you feel about the IWBS moving to the Dawson Centre?

"Don't really care" (2 responses)
"can't be bothered with the change"
"I am supporting it"
"I don't care, as long as I can attend a school"
"I'm indifferent so long as the same facilities are here are available"
"I don't care " (3 responses)
"I don't mind because I won't be there"

Can you tell us anything that you would be excited about with the move to the Dawson Centre?

"no"
"better self-travel options"
"not really" (2 responses)
"I'm excited a the thought of a different school and new things to try out"
"absolutely nothing"
"there is nothing"
"nope" (2 responses)

Is there anything that worries you about the move to the Dawson Centre?

"no" (3 responses)
"There are unknown things, such as where can I vape? Where I take my time-out?
Where can I have personal space?"
"it's too far away from this school"
"There will be more travelling and there are new things to have to get use to"
"it will be a little bit closer to home"
"nope"
"I won't be here"

What would you like the new school location to have?

"nothing"
"Bus stop near by, gaming, common room - a place to hang out that's not a classroom"
"I don't know"
"nothing"
"I would like there to be more technology such as play stations to use after I finish tasks"
"swimming pool, sauna, steam room, nice canteen, gym hall, teaching kitchen, games room"
"Games room, home time earlier, teaching kitchen, pupil common room"

"nope"

Responses from those unsupportive/strongly unsupportive of the proposal

How do you feel about the IWBS moving to the Dawson Centre?

"I doesn't bother me"

Can you tell us anything that you would be excited about with the move to the Dawson Centre?

"Happy there's grass"

"no"

Is there anything that worries you about the move to the Dawson Centre?

"No" (2 responses)

What would you like the new school location to have?

"Jump Track, sweet shop"

"football pitch - turf"

Appendix 4: Responses to the online survey

Responses from those In support of the relocation of the IWBS to the Dawson Centre

Please specify any additional resources or improvements required at the new site.

“Reconfiguration of internal spaces. Secure fencing. Development of outdoor spaces” *(Staff member at the IWBS)*

What potential benefits do you see in relocating to the Dawson Centre?

“Improved conditions and environment” *(Other)*

“Better learning environment compared to current site. Building in much better state of repair. Better outdoor environment and green spaces. Better parking facilities for staff, council vehicles, parents, carers and pupil transport.” *(Staff Member at the IWBS)*

What improvements would you like to see in the new facility?

“To make disabled access as easy as possible.” *(Other)*

“Development of the outdoor facilities to support pupils and the local community. Relocation of storage facilities from current campus to supplement onsite storage. Improvement in security through improved and extended fencing and installation of comprehensive CCTV system.” *(Staff member at the IWBS)*

Do you have any concerns about the IWBS relocating to the Dawson Centre and, if so, how can these concerns be addressed?

“Reduction in internal space - can be alleviated by additional storage facilities (containers etc) and careful use of outdoor space. Potential for purchase and use of outdoor building(s).” *(Staff member at the IWBS)*

Do you have any further comments on the proposed relocation of the IWBS to the Dawson Centre?

"Accessibility is critical" *(Other)*

"The current facility is a poor quality building tucked away. It must give a sense of alienation to the young people sent there. It certainly does not say 'inclusion and well-being' to me no matter how much the staff may try" *(Other)*

"The current provision is not fit for purpose, and the pupils and staff of IWBS deserve a better environment to help nurture and support some of the most vulnerable young people in Falkirk." *(Staff Member at the IWBS)*

"The transfer should take place as quickly as possible as the current premises is not fit for purpose and more than likely has a negative effect on the pupils and staff who work there." (*Trade union*)

"It will be a positive move for pupils as the current building is in poor condition. However I am slightly concerned about the lack of space for staff to work from as they do not have a classroom or base assigned." (*Staff Member at the IWBS*)

"The current facility at the Bog Road site is a poor quality building which is uninspiring for learners. The proposed move to the Dawson Centre should provide a much better learning and teaching environment for children and young people attending the IWBS. Access to open space and outdoor learning opportunities are welcome. Care should be taken to ensure any facilities at the Laurieston site are replicated at the Dawson Centre. It is important that the privacy and security of pupils attending IWBS is carefully considered. The IWBS should offer placements to any learners in S5 and S6 who do not wish to leave school at 16 and the new premises should be configured and resourced (including sufficient staffing) to support this.

The overall proposal makes financial sense to Falkirk Council in the continuing austerity period in government finances. In previous years, the preferred option would be a new school building for IWBS that did not impact on other services to local communities. This proposal is not consequence-free and while it is preferable to closure of the Dawson Centre altogether, the loss of amenity to local residents in Langlees is regrettable, particularly for charitable and community organisations and good causes.

Falkirk Council must ensure that evening, weekend and school holiday access is guaranteed for these organisations in the long term and that any groups currently using the Dawson Centre during the school day are offered high quality alternative premises within the local community. To provide certainty of access to facilities for community users, a contract or lease agreement should be offered." (*Parent/Carer of a pupil attending the IWBS*)

Responses not in support of the relocation of the IWBS to the Dawson Centre

Please specify any additional resources or improvements required at the new site.

“Why are you asking this, if it's not a done deal?” (*Staff member at the IWBS*)

What potential benefits do you see in relocating to the Dawson Centre?

“lots for the school, none for a community, in fact this option is the worst outcome for a community in which has 4 of 5 SIMD datazones in the worst deprived areas in Scotland.” (*Other*)

Do you have any concerns about the IWBS relocating to the Dawson Centre and, if so, how can these concerns be addressed?

“My concerns are related to the impact on the community only.” (*Other*)

Can you tell us what you use the Dawson Centre or Excellence in Childcare Centre for?

“Car park and safe drop off and collection for child at Langlees Primary School.” (*Community Group using the Dawson Centre*)

“Child community group as well as own children access groups and I run groups from there” (*Community Group using the Dawson Centre*)

Do you have any concerns about access by the community in the evening, weekends and schools holidays when the school is closed if the IWBS relocating to the Dawson Centre is progressed and, if so, how can these concerns be addressed?

“Yes, there is no safety crossing person for Langlees Primary School.

There is insufficient car drop off area and safe space to be able to drop off children at Langlees.

Currently the main road is blocked and reduced to one lane traffic with non-parents speeding through the zone.

The facilities at Dawson Centre offer a safe place to drop off and pick up children.

Often we will cycle in and the back lane offers safe entrance to the school and offers safe entrance to all the houses to the east of the school. This will be blocked without access to the rear.

The sports facility is used by the school during sports and extra curricular activity and is a great asset to the school and currently facilities have to be planned to avoid duplication of bookings between pitches and football pitch, increase in access will reduce access for Langlees Primary students.

Safety is critical and safe entrance and exit into the school building needs to be prioritised.

Having 3 schools (Early Years, Primary and new facilities) all accessing school at the same time will create a safety risk to pupils, parents and teachers. Increased abuse on staff and parent volunteers will occur.

A solution is to create a safe drop off / pick up area/turning circle to the front of the school or opposite (with crossing) in the council premises." (*Community Group using the Dawson Centre*)

Do you have any further comments on the proposed relocation of the IWBS to the Dawson Centre?

"This is not a good decision, the local people who live in Langlees/Bainsford will suffer greatly due to this proposal." (*Other*)

"Further consideration is required based on increased numbers, vehicles and people into the area." (*Community Group using the Dawson Centre*)

"Taking away from local community in a poverty area where there is a lack of amenities already" (*Community Group using the Dawson Centre*)

"The parking and extra traffic to the area where my daughter goes to school I feel will be unmanageable. Considering it can already be unsafe. The Dawson centre is a safe area and enables us to access the school from the back gate" (*Dawson Centre User*)

Reponses from those with a neutral response to the relocation of the IWBS Service to the Dawson Centre

Do you have any further comments on the proposed relocation of the IWBS to the Dawson Centre?

"Has the impact on the local community been considered with the increase in traffic and footfall the move will bring?

Langlees families traveling by car are encouraged to access the school using the car park at the Dawson centre, this mitigates but doesn't solve the parking and traffic issues.

There are already issues with parking and traffic due to the number of children attending both the school and the nursery.

The school and nursery both have large catchment areas which results in more cars entering the area.

School staff have received abuse when trying to police the car park in the past as this is not a safe space for young children, these issues are only going to increase with limiting the Dawson centre car park and increasing traffic to the area at peak times.

These issues should be taken into consideration when making this decision." (*Other*)

Appendix 5: Public Meeting Minutes

Public Meeting

Langlees Primary School

Date: 27th November 2024 18:30-19:30

Speakers:

Jon Reid (JR), Director of Education

Paul Kettrick (PK), Head of Investment, Asset and Communities

Deborah Davidson (DD), Head of Education

Siobhan Coultie, Forward Planning Officer (minute taker)

Charlotte Patterson, Programme Management Co-ordinator

Group Represented	
Local Resident	3
Dawson Centre User	6
Staff from IWBS	4
Works within the Community	4
Parents	3
Friends of Dawson Park	6
Elected Member	1
Education Scotland	1
Total	28

1. What is the current status of the MUGA (Multi-Use Games Area)?

- **Question:** The MUGA is located at “Coo Park” and not part of the Dawson Campus. Is it Council property?
- **PK Response:** The MUGA is owned by the Council but leased to a charitable organisation. The Council refers to it as part of the Dawson Campus. The facility has deteriorated due to lack of investment, and the proposal would transfer maintenance responsibility to the Council, ensuring community access during evenings, weekends, and holidays.

2. Why weren't key stakeholders consulted earlier?

- **Question:** The Dawson Sports Development Association has a lease for the MUGA but was not engaged. Why?
- **PK Response:** This is the start of the statutory consultation process. While some discussions occurred with community groups, pre-consultation can lead to misinformation. This meeting and the consultation aim to formally gather feedback for the proposal.

3. What about the 15-year lease and community insurance payments?

- **Question:** The Dawson Sports Development Association pays over £1,100 annually for insurance under a 15-year lease. Why hasn't this been acknowledged?

- **PK Response:** The Council has not received documentation to confirm this. Community groups are encouraged to submit proof during the consultation process for review.

4. What will happen to the Dawson Centre and MUGA if this proposal isn't implemented?

- **Question:** What is the future of the Dawson Centre and the MUGA if this proposal is rejected?
- **PK Response:** Without the proposal, the Dawson Centre will close on April 1. The site could be sold, leased commercially, or demolished. The proposal is intended to maintain the building for dual educational and community purposes.

5. How will children with additional support needs (ASN) benefit from the proposal?

- **Question:** Will the proposal expand services for children with ASN, particularly for ages 3-18?
- **DD Response:** Placement decisions will continue to be needs-based. While the proposal does not immediately expand capacity, a wider review of ASN services is underway to ensure schools are equipped to support these students.

6. Why isn't parking or accessibility addressed in the proposal?

- **Question:** Parking near Langlees Primary is already problematic, and the EV chargers are heavily used. Why isn't the proposal addressing these issues?
- **PK Response:** The proposal does not include additional funding for parking or pathways. However, consultees can submit these suggestions, and if widely supported, they will be costed and presented to Councillors for potential inclusion in the budget.

7. Why didn't the Council notify all users of the facility about the proposal?

- **Question:** Why were users of the Dawson Centre and MUGA not directly informed about this proposal?
- **PK Response:** PK apologised for any oversight and explained that the Council does not typically notify users directly before consultations. Efforts were made to publicise the consultation widely.

8. What happens to the Dawson Centre's power supply if it closes?

- **Question:** If the Dawson Centre closes, will the MUGA lose power?
- **PK Response:** If the Centre is closed and not repurposed, power to the MUGA would also be disconnected. The proposal would maintain power by integrating it into the new facility.

9. Can existing community events, like Santa's Grotto, continue under the new proposal?

- **Question:** Santa's Grotto and similar events require large spaces. Can these still be hosted?
- **PK Response:** Efforts will be made to accommodate such events using available spaces, such as the school hall or other rooms, during evenings and weekends.

10. How secure will the school be, and will it restrict community access?

- **Question:** Will secure fencing around the school block public access to green spaces and walkways?
- **PK Response:** Secure fencing will be installed to ensure school safety during hours of operation. Public access will be restricted during these times but remain open during evenings, weekends, and holidays.

11. Will the community face charges for facility use?

- **Question:** Will there be charges for using the hall or other parts of the facility?
- **PK Response:** Yes, there will be charges, but the fee structure is under review. Charities and community groups may receive discounted rates, while private or commercial activities will face standard rates.

12. What fees will apply to community use of the facility?

- **Question:** Will additional charges apply to activities like casual sports on the MUGA?
- **PK Response:** No fees are planned for informal community use, such as children playing sports on the MUGA. However, organised group activities or bookings may incur costs to cover maintenance and utilities.

13. Will the Council guarantee a future for the Bowling Club land?

- **Question:** The Bowling Club land was provided for community use. Will this remain the case?
- **PK Response:** The Bowling Club land is not part of the current proposal. PK suggested the community could submit interest under the Community Empowerment Act for future use.

14. Can additional uses, like community gardening, be incorporated?

- **Question:** In the past, proposals for community gardening were rejected. Could this be revisited?

- **PK Response:** PK encouraged the community to submit feedback about potential uses for underutilised land. New proposals will be considered if they align with the Council's resources and priorities.

15. How does the Council justify spending £835,000 on this project instead of housing repairs?

- **Question:** Why allocate significant funds to this project when there are other urgent needs, like repairing damaged houses?
- **PK Response:** The Council's budgets for education and housing are separate and cannot be interchanged. This proposal is funded through the General Services Program, which is distinct from housing budgets.

16. Is this proposal already decided, or can feedback make a difference?

- **Question:** Is this consultation meaningful, or is the proposal already a done deal?
- **PK Response:** This is not a done deal. Feedback collected during the consultation will be reviewed and included in a report to Councillors, who will make the final decision.

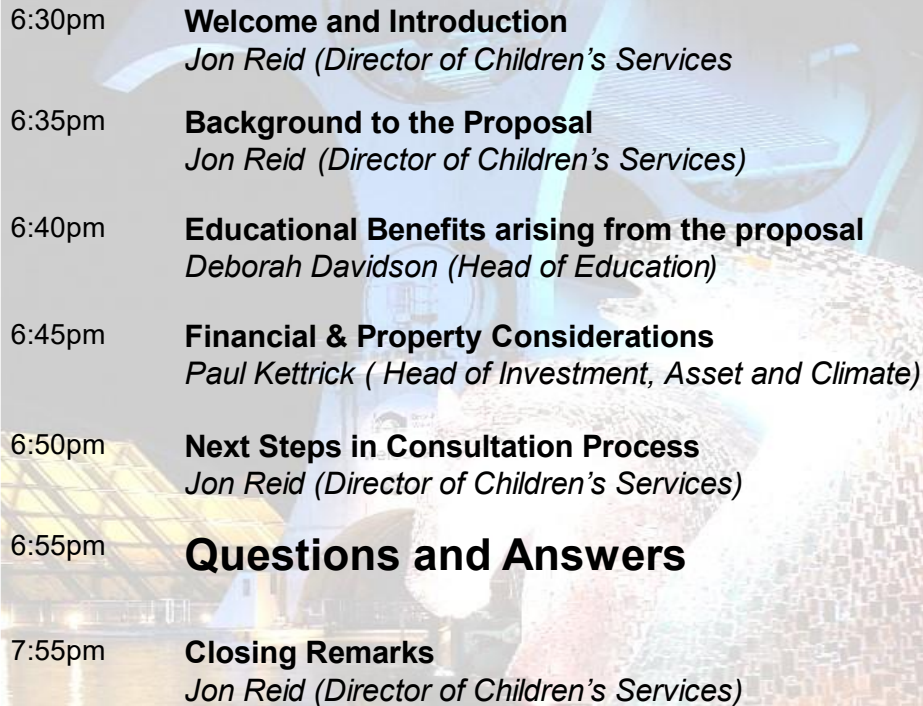
Final Remarks:

Jon Reid emphasised the goal of creating a new facility tailored to the needs of young people, providing a positive learning environment while preserving the asset for community use. Acknowledging the strong community sentiment expressed during the meeting, he encouraged participants to share their feedback via the council's *Participate Plus* website. All comments and suggestions from the meeting, along with those submitted online, will be included in a report to elected members for consideration. An independent report will also be prepared by Education Scotland. He stressed the importance of submitting alternative suggestions and assured that community workers will engage with local groups throughout the process.

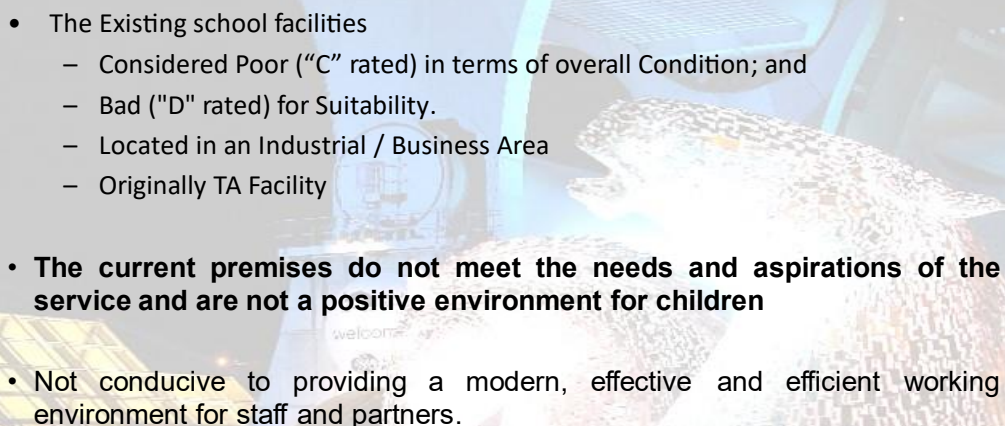
Public meeting Closed

Appendix 6: Presentation Slides

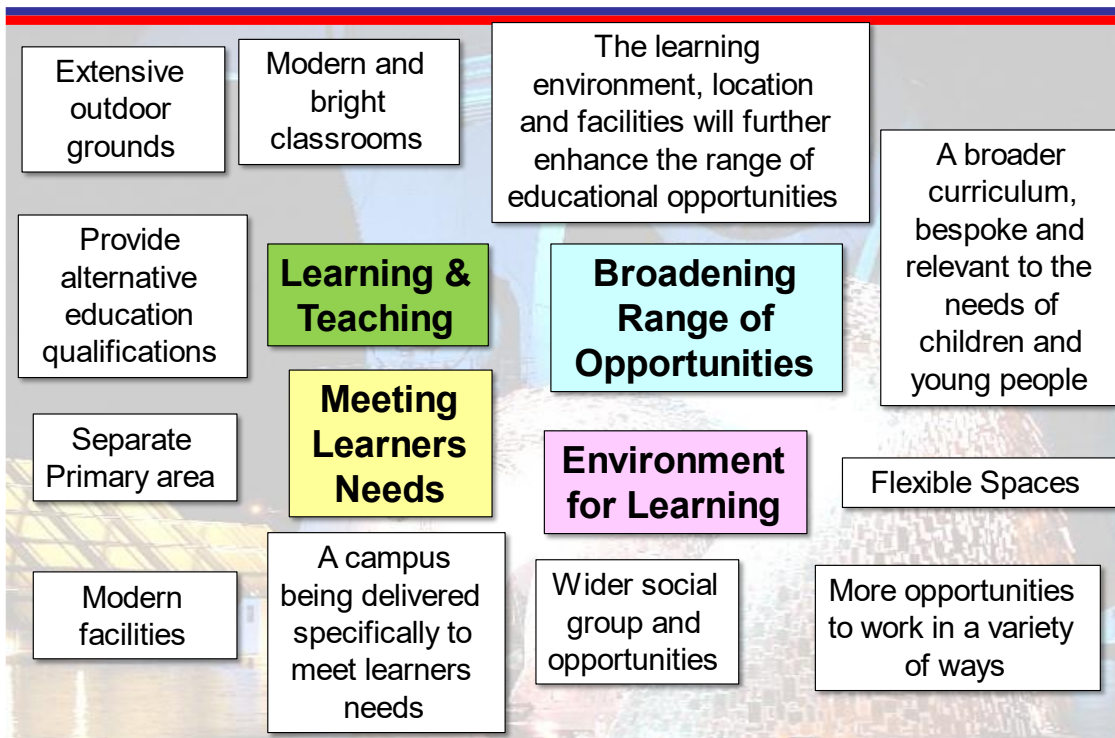
AGENDA

- 
- 6:30pm **Welcome and Introduction**
Jon Reid (Director of Children's Services)
 - 6:35pm **Background to the Proposal**
Jon Reid (Director of Children's Services)
 - 6:40pm **Educational Benefits arising from the proposal**
Deborah Davidson (Head of Education)
 - 6:45pm **Financial & Property Considerations**
Paul Kettrick (Head of Investment, Asset and Climate)
 - 6:50pm **Next Steps in Consultation Process**
Jon Reid (Director of Children's Services)
 - 6:55pm **Questions and Answers**
 - 7:55pm **Closing Remarks**
Jon Reid (Director of Children's Services)

Background to the proposal

- 
- The Existing school facilities
 - Considered Poor ("C" rated) in terms of overall Condition; and
 - Bad ("D" rated) for Suitability.
 - Located in an Industrial / Business Area
 - Originally TA Facility
 - **The current premises do not meet the needs and aspirations of the service and are not a positive environment for children**
 - Not conducive to providing a modern, effective and efficient working environment for staff and partners.

Educational Benefits



Financial and Property Consideration's

Objective:

- To create a learning space that is in better condition, modern, fit for purpose, good quality learning environment and accessible for our Children and Young People and the staff who work with them .

The Solution:

- SPR – identified Dawson Centre and EiCC (Dawson Campus) as suitable
 - Compatible size
 - Better condition
 - Locational benefits (next to Langleys Primary School)
 - Provision of school meals
 - Integrated facilities management

Asset Performance:

- Satisfactory to good “A/B rated” for suitability (which will be assessed following a period of operational availability); and
- Satisfactory (“B” rated) for condition.

Accommodation and Design

Accommodation Principles:

- Modern Teaching Environments / Classrooms
- Separate primary and secondary classrooms located within single Campus
 - Enables easier transitions for pupils.
 - Dedicated pupil nurture and support areas
- Flexible support accommodation would further improve the support to pupils, parents and staff.
- Outdoor Learning Opportunities
- Improved Physical Education (Playing Field / MUGA / Fitness Suite / Hall)

Design / Works:

- Internal layout alterations to provide classrooms, formation of breakout / quiet rooms and ancillary accommodation.
- Mechanical and Electrical Improvements
- General Fabric / Building Improvements

Financials – Capital & Revenue

- Within the General Services Capital Programme 2024/25 to 2027/28, £500,000 investment was approved to progress the project.
- Following detailed appraisals and development of the accommodation brief it has been estimated that construction costs are £835,000.
- The request for the additional capital funding support will be considered as part of the future report for the 2025/26 to 2029/30 Capital Programme. This request will be following the statutory consultation.
- Avoidance of Backlog Maintenance circa £2.4m+
- Estimated Property - Revenue Saving of £25,000

Property	MEP rating	Building Fabric rating	Overall building rating	Suitability rating	Total backlog maintenance costs	Running costs 23/24
Existing IWBS	D	C	C	D	£2,404,650	£ 204,157
Dawson Centre	D	B	C	A	£683,867	£ 95,052
Excellence in Childcare Centre	C	B	B	B	£137,859	£ 19,994
New Campus (projected ratings)	B	B	B	A/B	N/A	£115,046

Wider project benefits

- Improved learning experience for Children and Young People.
 - Improved environment for staff and stakeholders within the IWBS
 - Reduced risk of compliance and component failure
 - Avoidance of backlog maintenance capital expenditure at existing IWBS Laurieston Campus of circa £2.4m.
 - Improvement of backlog maintenance required at Dawson Campus (approximately £800,000) through the proposed works.
 - Securing the Dawson Centre Campus to provide continued community access which is currently uncertain due to the Strategic Property Review (SPR).
 - Delivers SPR saving.
 - Reduces the number of properties the Council operates that are in poor and ageing condition.
- **The educational and asset outcomes of the proposal will provide the IWBS that has good learning and nurture environments within buildings that are satisfactory in terms of condition and suitability.**

Next Steps in Consultation Process

- Consultation Closes on 23rd December
- Education Scotland report back to Council by 31st January 2025
- Consultation Report Published on website (all respondents notified)
- Council Decision on Proposal (13th March 2025)

Appendix 7 Education Scotland Report

Schools (Consultation) (Scotland) Act 2010

Report by Education Scotland addressing educational aspects of the proposal by Falkirk Council to relocate the Inclusion and Wellbeing Service from the Laurieston Campus, Bog Road, Falkirk to the Dawson Centre Campus, David's Loan, Falkirk.

January 2025

1. Introduction

1.1 This report from Education Scotland has been prepared by His Majesty's Inspectors of Education (HM Inspectors) in accordance with the terms of the [Schools \(Consultation\) \(Scotland\) Act 2010](#) ("the 2010 Act"). The purpose of the report is to provide an independent and impartial consideration of a proposal by Falkirk Council to relocate the Inclusion and Wellbeing Service (IWBS) from the Laurieston Campus, Bog Road, Falkirk to the Dawson Centre Campus, David's Loan, Falkirk. Section 2 of the report sets out brief details of the consultation process. Section 3 of the report sets out HM Inspectors' consideration of the educational aspects of the proposal, including significant views expressed by consultees. Section 4 summarises HM Inspectors' view. Upon receipt of this report, the Act requires the council to consider it alongside any relevant considerations the council received and then prepare its consultation report. The council's consultation report should include this report and must contain an explanation of how, in finalising the proposal, it has reviewed the initial proposal, including a summary of points raised during the consultation process and the council's response to them. The council has to publish its consultation report at least three weeks before it takes its final decision. With all proposals the council needs to follow all statutory obligations set out in the 2010 Act.

1.2 HM Inspectors considered:

- the likely effects of the proposal for children and young people of the school; any other users; children likely to become pupils within two years of the date of publication of the proposal paper; and other children and young people in the council area;
- any other likely effects of the proposal;
- how the council intends to minimise or avoid any adverse effects that may arise from the proposal; and
- the educational benefits the council believes will result from implementation of the proposal, and the council's reasons for coming to these beliefs.

1.3 In preparing this report, HM Inspectors undertook the following activities:

- attendance at the public meeting held on 27 November 2024 in connection with the council's proposals;
- consideration of all relevant documentation provided by the council in relation to the proposal, specifically the educational benefits statement and related consultation documents, written and oral submissions from parents and others; and

- visits to the sites of the Laurieston Campus, Bog Road, Falkirk and the Dawson Centre Campus, David's Loan, Falkirk, including discussion with relevant consultees.

2. Consultation process

2.1 Falkirk Council undertook the consultation on its proposal with reference to the [Schools \(Consultation\) \(Scotland\) Act 2010](#).

2.2 The consultation ran from 11 November until 23 December 2024. The council held a public meeting in Langlees Primary School on 27 November 2024 in connection with the proposal. The council published the proposal on its website and copies were made available to a range of key consultees. Notices and articles pertaining to the proposal were placed in local print media, social media and displayed in relevant council buildings.

2.3 In total, there were 17 online responses to the consultation. Nine were supportive, five were unsupportive and three were neutral. The main concerns raised were about the impact on the services currently housed in the Dawson Centre, and about the potential increase in traffic and parking. A total of 28 people attended the public meeting. Views were represented by local residents, current Dawson Centre users, staff and families from IWBS. Local residents voiced concerns around the change of use of the Centre and its impact on local residents using the Centre. The council surveyed children and young people who use the service. They received 23 responses. Children, young people, staff and parents of the IWBS were generally supportive of the move out of the current building. Following the public meeting, senior leaders from the school and selected staff undertook a site visit to the proposed new campus to discuss options for fencing and security around the proposed school site.

3. Educational aspects of proposal

3.1 The council outline several educational benefits that it believes will be realised if the proposal is implemented. The proposed site provides extensive outdoor grounds and a floodlit multi-use games area to enable opportunities for outdoor learning, gardening and sports qualifications. The proposed new classrooms will be brighter and more modern than the existing provision, with an improved digital infrastructure. This should provide a more motivating and engaging learning environment and opportunities to improve the curriculum. The primary school area will be situated separately and will have an extensive outdoor play area to accommodate play and other activities to promote health and wellbeing. Falkirk Council envisage that the new campus will cater for children and young people whose distress arises from neurodiversity and sensory needs. The proposed new site will also cater for children and young people with additional social, educational and behavioural needs. The relocation of the IWBS should provide a more appropriate community-based setting, which better meets the needs of this group. It

should provide more opportunities and increased suitable space for time outdoors. This will support children and young people who would benefit from time outdoors to self-regulate.

3.2 The current site of the IWBS is set across a number of disparate buildings, many of which require substantial upgrading and are rated poorly for their suitability as school accommodation. There are accessibility issues, and it is situated within an industrial area. The current IWBS campus has limited facilities for outdoor learning, sports and access to the community.

3.3 The proposed site is situated within a community, rather than a business/industrial location. This will improve children and young people's access to amenities, transport and provide a more inclusive environment for learning.

3.4 HM Inspectors agree that the proposed move to refurbished premises should provide a more suitable learning environment for children and young people attending IWBS. It should improve the working environment and accessibility for staff. It will also be more energy and cost efficient.

3.5 Teaching and support staff who met with HM Inspectors are generally positive about the proposal. They believe the current school building is in poor condition overall. The location and structure of the existing premises results in limitations in accessing facilities and does not present a pleasant, inclusive learning environment. The road to enter the current school building is in very poor repair, making accessibility in the winter particularly difficult. There is a lack of appropriate outdoor space and little access to public transport or community amenities. Staff are keen to be more included in the design and decision-making process for the proposed move. They are keen to keep existing positive elements of service and curriculum delivery if the proposal proceeds. For example, they currently make good use of a teaching kitchen, gym and family centre. They see the potential benefits of increased partnership working with the adjacent school at the proposed premises. Refurbished premises should provide a more appropriate and positive setting for children and young people to feel more valued as learners. However, staff consider that the open aspect of the outdoor spaces in the proposed building are potentially too overlooked by the community. They are hopeful that the refurbishment would ensure adequate levels of privacy for children and young people who may use the outside space when feeling distressed or upset. They understand the benefits and recognise the challenges of providing their service within the heart of a community.

3.6 Children and young people who met with HM Inspectors are positive about the proposal, recognising the problems with their current accommodation. Parents who engaged with the proposal were also supportive of a move, although expressed some concerns about the proximity of the outside spaces to the adjacent school, for similar reasons as stated above. The current school has a dedicated parent's area, used as a drop-in and meeting space. They stressed the value and supportive nature of this provision and are keen to ensure that this space is provided in the proposed new premises.

3.7 During the consultation period consultees identified an omission in the proposal relating to proposed parking at the Dawson Centre. Consultees from the community also raised concerns about how they would access the services currently situated at the Dawson Centre. The council will need to ensure that it takes the necessary steps to address these omissions. The council noted at the public meeting that the Dawson Centre will close on 1 April 2025, if the proposal is not implemented. The relocation of IWBS will maintain the building for 'dual education and community purposes'. In its consultation report, the council will need to set out the actions it has taken to address these points.

4. Summary

It is HM Inspectors view that Falkirk Council's proposal to relocate IWBS from its current premises at the Laurieston Campus to refurbished accommodation in the Dawson Centre building is of clear educational benefit. The council outlines the benefits for children and young people well. The move to refurbished premises will allow staff to better meet the range of pupil's needs in a more suitable and inclusive environment. Key stakeholders welcome the proposal. They feel that the relocation to a refurbished building will provide a much-improved environment for learning. In taking forward the proposal the council should continue to consult with staff and stakeholders at IWBS. In its consultation report, the council will need to set out the actions it has taken to address the omission in the proposal relating to proposed parking at the Dawson Centre. The council should continue to work with the community to outline in more detail how the refurbishment might fulfil its dual education and community role.

HM Inspectors
January 2025